



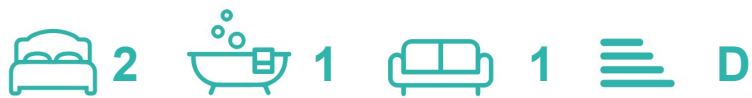
73 Intrepid Close , Hartlepool, TS25 1GF

Nestled in the sought-after area of Warrior Park, this charming semi-detached house on Intrepid Close offers a delightful living experience. Spanning 613 square feet, the property features a well-designed layout that includes a welcoming reception room, fully fitted kitchen, two decent sized bedrooms, and a modern bathroom, making it an ideal home for small families or couples.

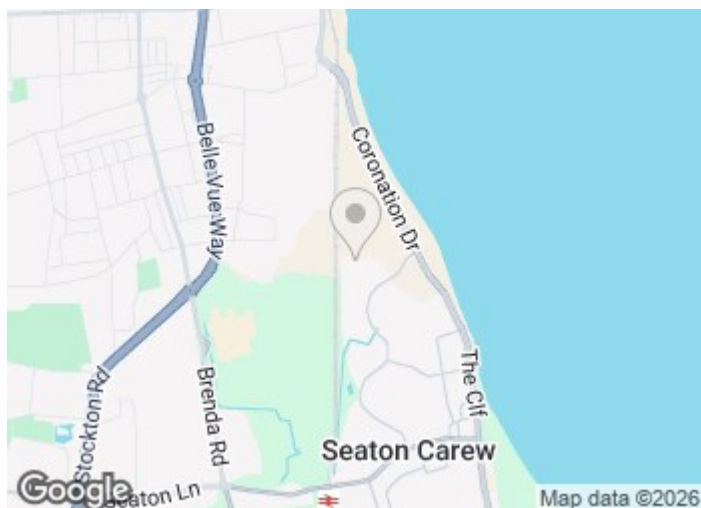
£142,000

73 Intrepid Close

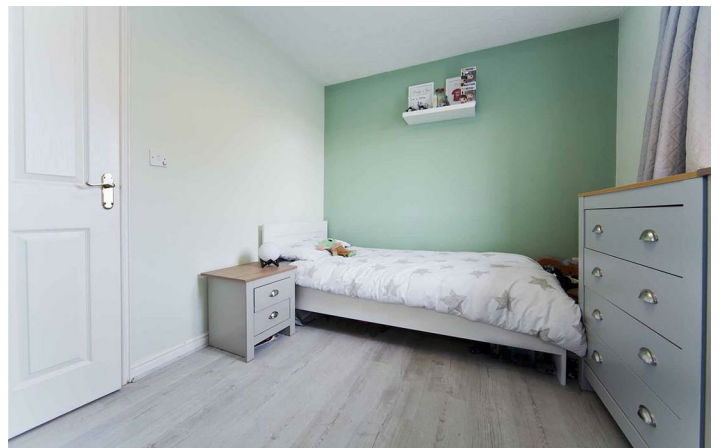
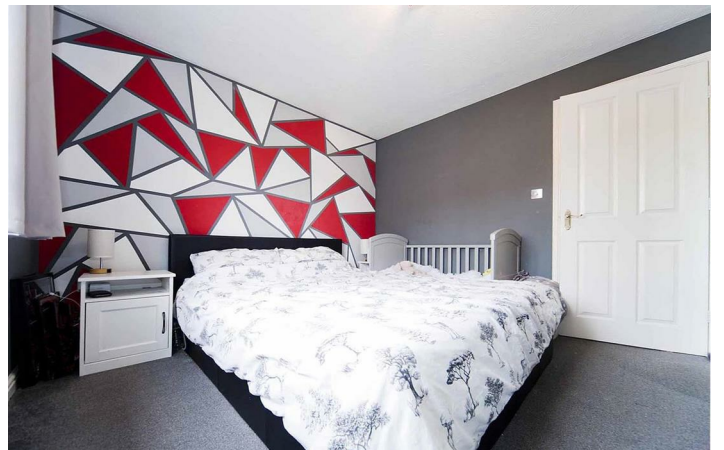
, Hartlepool, TS25 1GF



- Desirable Area
- Detached garage
- Corner Plot
- Private rear garden
- Driveway for 2 cars



[Directions](#)



Floor Plan

These particulars, whilst believed to be accurate are set out as a general outline only for guidance and do not constitute any part of an offer or contract. Intending purchasers should not rely on them as statements of representation of fact, but must satisfy themselves by inspection or otherwise as to their accuracy. No person in this firm's employment has the authority to make or give any representation or warranty in respect of the property.

